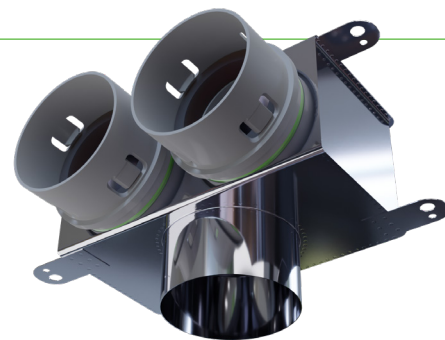
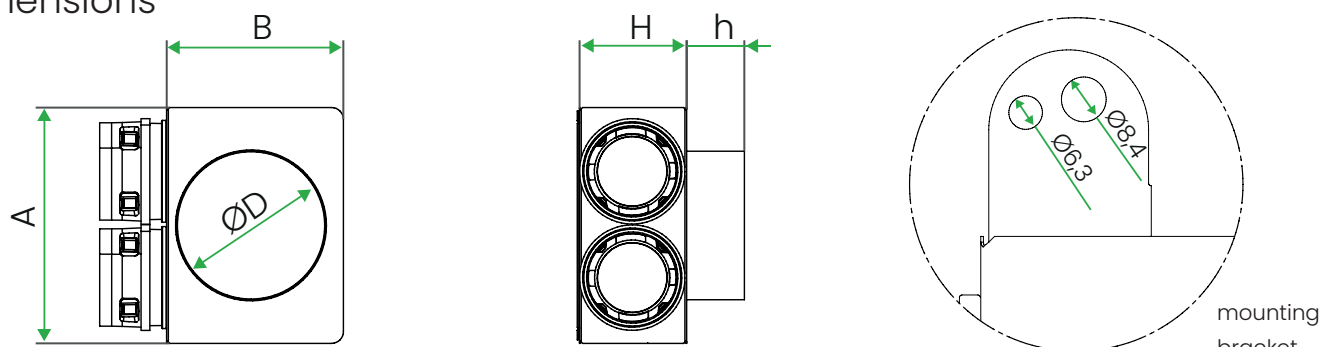


PEFLEX INOX Stainless Steel Angular Plenum Box

For ventilation ducts $\varnothing 90$



Dimensions



Boxes with nipple spigot (for extension)

	Product code	Number of spigots	$\varnothing D$ (hole diameter) [mm]	A (length) [mm]	B (width) [mm]	H (height) [mm]	h (spigot height) [mm]
For $\varnothing 100$ diffusers	1x90/98	1	98	145	125	100	53
	2x90/98	2		230			
For $\varnothing 125$ diffusers	1x90/123	1	123	160	150		
	2x90/123	2		230			
For $\varnothing 160$ diffusers	2x90/158	2	158	230	190		
	3x90/158	3		340			

Boxes with socket spigot (for direct connection to the diffuser)

	Product code	Number of spigots	$\varnothing D$ (hole diameter) [mm]	A (length) [mm]	B (width) [mm]	H (height) [mm]	h (spigot height) [mm]
For $\varnothing 100$ diffusers	1x90/100	1	100	145	125	100	53
	2x90/100	2		230			
For $\varnothing 125$ diffusers	1x90/125	1	125	160	150		
	2x90/125	2		230			
For $\varnothing 160$ diffusers	2x90/160	2	160	230	190		
	3x90/160	3		340			

Description

PEFLEX INOX stainless steel plenum boxes are equipped with plastic connection sockets for ducts **in the CLIK system with a built-in gasket**, which significantly speeds up the installation and **guarantees its tightness**. PEFLEX INOX $\varnothing 90$ plenum boxes are designed for the installation of round PEFLEX ventilation ducts with an outer diameter of 90 mm. Each box is equipped with mounting brackets with hole diameters of $\varnothing 6.3$ and $\varnothing 8.4$ mm.

PEFLEX INOX angular plenum boxes are available in two variants, with the following connectors:

- **socket** - for direct connection of $\varnothing 100$, $\varnothing 125$ or $\varnothing 160$ diffusers.
- **nipple** - for mounting an extension tube with an internal diameter of 100, 125 or 160 mm.